

High-speed Camera MINI Series



SH3-103

1280 x 1024 3000fps

1280 x 8 219000fps

Impact resistance 200G
Sturdy structure

210ns
Double exposure time PIV

Automatic white balance, intelligent
denoising
Rich ISP processing

Below 10e-
Low noise circuit design

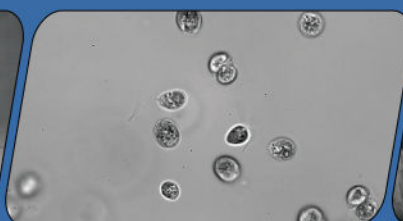
SH3-103 is another masterpiece of MINI series for high-end scientific research and industry in SinceVision's intelligent high-speed camera family, which has a perfect balance of body size and heat dissipation through its 20-layer PCB stacking design and 10Gbps Serdes on-board interconnection technology with fully independent intellectual property rights. At the same time, thanks to the self-developed array parallel storage architecture, the maximum storage in the device can be expanded to 4TB, and the small size also has a big role to play.



Research: Powder combustion



Research: Battery explosion



Biomedicine: Cell observation



Military Industry: Blasting test

SH3-103

Bit depth		8-bit Recording Time		10-bit Recording Time		
Resolution	Frame Rate (fps)	RAM 64GB (s)	Disc 2TB(min)	Frame Rate (fps)	RAM 64GB (s)	Disc 2TB(min)
1280x1024	3000	17	8	2400	17	8
1280x768	4000	17	8	3200	17	8
1280x512	6000	17	8	4800	17	8
1280x256	11900	17	8	9500	17	8
1280x128	23100	18	9	18000	18	9
1280x32	78000	21	10	62000	21	10
1280x8	219000	30	15	174000	30	15

※ The 128GB version has twice the recording time as 64GB of memory, so as to 32GB version compared to 16GB version;

※ The 4TB version has twice the recording time as 2TB of memory. The disc supports real-time writing in full resolution at full frame rate.

Max. Resolution 1280x1024

Full Frame Rate 3000fps

Max. Frame Rate 219000fps

Min. Exposure Time 100ns

Cell Size 14.6μm

Shutter Global shutter

Bit Depth 8bit/10bit

Color Monochrome (M)/ Color (C)

Sensitivity ISO67000(M)/ISO23000(C)

Dynamic Range 60dB

Double exposure time PIV 210ns

Analog Gain ×2, ×4, ×8

Standard RAM 16GB/32GB/64GB/128GB

Extended Memory 2TB/4TB

Window Acquisition (ROI): Support

Recording Mode Start, End, Center, Random, Manual

Dimensions 90D×110W×110H, excluding protrusion parts

Camera Weight <1.8kg

Lens Mount E Port (Adapt to F/C/EF mount)

Power Consumption DC24V, 30W

Operating Temperature Standard -10~50°C, customizable -40~65°C wide temperature range version

Heat Dissipation Air cooling with fan, which can be turned on and off, and can adapt the rotation speed according to the temperature.

Vibration resistance 200G in 3-axis direction

Camera I/O Interface



Video Signal Output Ethernet

Data Interface 10 Gigabit Ethernet, compatible with 2.5Gbps, 1Gbps

Input Signal Trigger signal, sync signal, ready signal, exposure signal, IRIG-B

Output Signal Trigger signal, sync signal, ready signal

7 X 24 hours Technical Support

E-mail: info@sincevision.com

Service covering:

South Korea, Vietnam, Thailand, Malaysia, Singapore, United Kingdom, France, Italy, Spain, Germany



SinceVision's
LinkedIn Account



SinceVision's
YouTube Account