

High-speed Camera MINI Series



SH3-105

1280 x 1024 5000fps

1280 x 8 365000fps

Impact resistance 200G
Sturdy structure

210ns
Double exposure time PIV

Automatic white balance, intelligent
denoising
Rich ISP processing

Below 10e-
Low noise circuit design

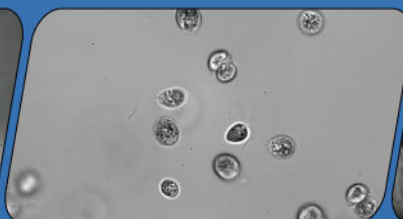
SH3-105 is another masterpiece of MINI series for high-end scientific research and industry in SinceVision's intelligent high-speed camera family, which has a perfect balance of body size and heat dissipation through its 20-layer PCB stacking design and 10Gbps Serdes on-board interconnection technology with fully independent intellectual property rights. At the same time, thanks to the self-developed array parallel storage architecture, the maximum storage in the device can be expanded to 4TB, and the small size also has a big role to play.



Research: Powder combustion



Research: Battery explosion



Biomedicine: Cell observation



Military Industry: Blasting test

SH3-105

Bit depth		8-bit Recording Time			10-bit Recording Time			
Resolution	Frame Rate (fps)	RAM 64GB (s)	Real-time disk write frame rate (fps)	Disc 2TB(min)	Frame Rate (fps)	RAM 64GB (s)	Real-time disk write frame rate (fps)	Disc 2TB(min)
1280x1024	5000	10	3000	8	4000	10	2400	8
1280x768	6700	10	4000	8	5100	10	3200	8
1280x512	10000	10	6000	8	8000	10	4800	8
1280x256	19900	10	11900	8	15000	11	9500	8
1280x128	39000	10	23100	9	31000	10	18000	9
1280x32	131000	12	78000	10	104000	12	62000	10
1280x8	365000	18	219000	15	290000	18	174000	15

※ The 128GB version has twice the recording time as 64GB of memory, so as to 32GB version compared to 16GB version;
 ※ The 4TB version has twice the recording time as 2TB of memory, so as to 32GB version compared to 16GB version; The disc supports real-time writing in full resolution at speed of 3000fps (8-bit).
 ※ The recording time of the disc is calculated by the frame rate of real-time writing.

Max. Resolution	1280x1024
Full Frame Rate	5000fps
Max. Frame Rate	365000fps
Min. Exposure Time	100ns
Cell Size	14.6μm
Shutter	Global shutter
Bit Depth	8bit/10bit
Color	Monochrome (M)/ Color (C)
Sensitivity	ISO67000(M)/ISO23000(C)
Dynamic Range	60dB
Double exposure time PIV	210ns
Analog Gain	×2, ×4, ×8
Standard RAM	16GB/32GB/64GB/128GB
Extended Memory	2TB/4TB
Window Acquisition (ROI):	Support
Recording Mode	Start, End, Center, Random, Manual
Dimensions	90D×110W×110H, excluding protrusion parts
Camera Weight	<1.8kg
Lens Mount	E Port (Adapt to F/C/EF mount)
Power Consumption	DC24V, 30W
Operating Temperature	Standard -10~50°C, customizable -40~65°C wide temperature range version
Heat Dissipation	Air cooling with fan, which can be turned on and off, and can adapt the rotation speed according to the temperature.
Vibration resistance	200G in 3-axis direction

Camera I/O Interface



Video Signal Output	Ethernet
Data Interface	10 Gigabit Ethernet, compatible with 2.5Gbps, 1Gbps
Input Signal	Trigger signal, sync signal, ready signal, exposure signal, IRIG-B
Output Signal	Trigger signal, sync signal, ready signal

7 X 24 hours Technical Support | E-mail: info@sincevision.com

Service covering:

South Korea, Vietnam, Thailand, Malaysia, Singapore, United Kingdom, France, Italy, Spain, Germany



SinceVision's
LinkedIn Account



SinceVision's
YouTube Account