

# High-speed Camera MINI Series



## SH3-502

2560 x 1920 2000fps

2560 x 8 365000fps

Impact resistance 200G  
Sturdy structure

280ns  
Double exposure time PIV

Outperforms its competitors  
Super large pixel size and superb light  
sensitivity

Below 10e-  
Low noise circuit design

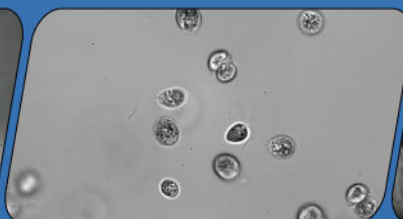
SH3-108 is another masterpiece of MINI series for high-end scientific research and industry in SinceVision's intelligent high-speed camera family, which has a perfect balance of body size and heat dissipation through its 20-layer PCB stacking design and 10Gbps Serdes on-board interconnection technology with fully independent intellectual property rights. At the same time, thanks to the self-developed array parallel storage architecture, the maximum storage in the device can be expanded to 4TB, and the small size also has a big role to play.



Research: Powder combustion



Research: Battery explosion



Biomedicine: Cell observation



Military Industry: Blasting test

# SH3-502

Bit depth		8-bit Recording Time			10-bit Recording Time			
Resolution	Frame Rate (fps)	RAM 64GB (s)	Real-time disk write frame rate (fps)	Disc 2TB(min)	Frame Rate (fps)	RAM 64GB (s)	Real-time disk write frame rate (fps)	Disc 2TB(min)
2560x1920	2000	6	500	13	1600	6	400	13
2560x1440	2700	6	630	14	2160	6	500	14
2560x960	4000	6	1000	13	3200	6	800	13
2560x512	7500	6	1800	14	6000	6	1500	13
2560x256	15000	6	3700	14	12000	6	3000	13
2560x128	29800	7	7000	14	23000	7	6000	13
2560x16	365000	9	120000	13	290000	9	48000	14

※ The 128GB version has twice the recording time as 64GB of memory, so as to 32GB version compared to 16GB version;  
 ※ The 4TB version has twice the recording time as 2TB of memory, so as to 32GB version compared to 16GB version; The disc supports real-time writing in full resolution at speed of 500fps (8-bit).  
 ※ The recording time of the disc is calculated by the frame rate of real-time writing.

Max. Resolution	2560x1920
Full Frame Rate	2000fps
Max. Frame Rate	365000fps
Min. Exposure Time	100ns
Cell Size	7.8μm
Shutter	Global shutter
Bit Depth	8bit/10bit
Color	Monochrome (M)/ Color (C)
Sensitivity	ISO23000(M)/ISO8000(C)
Dynamic Range	60dB
Double exposure time PIV	280ns
Analog Gain	×2, ×4, ×8
Standard RAM	16GB/32GB/64GB/128GB
Extended Memory	2TB/4TB
Window Acquisition (ROI):	Support
Recording Mode	Start, End, Center, Random, Manual
Dimensions	90D×110W×110H, excluding protrusion parts
Camera Weight	<1.8kg
Lens Mount	E Port (Adapt to F/C/EF mount)
Power Consumption	DC24V, 30W
Operating Temperature	Standard -10~50°C, customizable -40~65°C wide temperature range version
Heat Dissipation	Air cooling with fan, which can be turned on and off, and can adapt the rotation speed according to the temperature.
Vibration resistance	200G in 3-axis direction

## Camera I/O Interface



Video Signal Output	Ethernet
Data Interface	10 Gigabit Ethernet, compatible with 2.5Gbps, 1Gbps
Input Signal	Trigger signal, sync signal, ready signal, exposure signal, IRIG-B
Output Signal	Trigger signal, sync signal, ready signal

7 X 24 hours Technical Support | E-mail: [info@sincevision.com](mailto:info@sincevision.com)

## Service covering:

South Korea, Vietnam, Thailand, Malaysia, Singapore, United Kingdom, France, Italy, Spain, Germany



SinceVision's  
LinkedIn Account



SinceVision's  
YouTube Account