

High-speed Camera

High-speed HD Series



SH6-201

2048 x 1024 1000fps

2048 x 32 10000fps

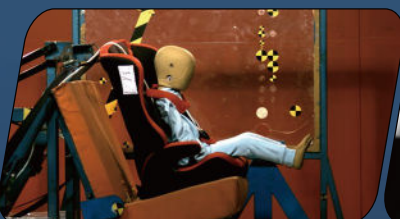
Support up to 24TB
non-volatile storage

IRIG-B timing
IRIG-B sync.

Standard 10GbE data transmission
interface, compatible with Gigabit
network transmission

Support intelligent image triggering
Automatic trigger with image change

SH6-201 is a full-featured high-speed camera built by SinceVision for high-end scientific research, national defense and military industry, aerospace, high-speed industry and other fields. It has an effective bandwidth of 20Gbps and excellent imaging quality by adopting special customized sensors and unique circuit design. At the same time, it has rich extensible interfaces, which makes high-speed imaging applications more possible.



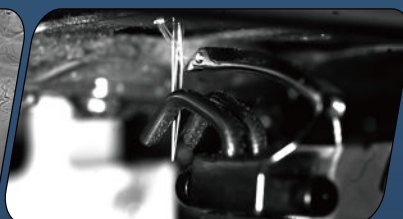
Automobile: Automobile collision



Industry: Crack extension



Research: Schlieren experiment



Industry: Motion of textile machine

SH6-201

Bit depth	8-bit Recording Time			10-bit Recording Time			12-bit Recording Time		
Resolution	Frame Rate (fps)	RAM 320GB (s)	Disc 12TB(min)	Frame Rate (fps)	RAM 320GB (s)	Disc 12TB(min)	Frame Rate (fps)	RAM 320GB (s)	Disc 12TB(min)
2048x1024	1000	163	97	500	262	156	250	436	260
2048x768	16000	136	81	800	218	130	400	364	217
2048x512	2000	163	97	1000	262	156	500	436	260
2048x256	4000	163	97	2000	262	156	1000	436	260
2048x128	5000	262	156	2500	419	250	1200	728	434
2048x32	10000	524	312	5000	838	500	2500	1398	833

※ The 320GB version has twice the recording time as 160GB of memory, so as to 80GB version compared to 40GB version;

※ The 12TB version has 3 times the recording time as 4TB of memory. The disc supports real-time writing in full resolution at full frame rate.

Max. Resolution	2048x1024
Full Frame Rate	1000fps
Max. Frame Rate	10000fps
Min. Exposure Time	1μs
Cell Size	9μm
Shutter	Global shutter
Bit Depth	8bit/10bit/12bit
Color	Monochrome (M)/ Color (C)
Sensitivity	ISO10000(M)/ISO3000(C)
Dynamic Range	64dB
Analog Gain	×2, ×4, ×8
Standard RAM	40GB/80GB/160GB/320GB
Extended Memory	4TB/12TB/24TB
Window Acquisition (ROI):	Support
Recording Mode	Start, End, Center, Random, Manual
Dimensions	210D×110W×110H, excluding protrusion parts
Camera Weight	3.8kg
Lens Mount	E Port (Adapt to F/C/EF mount)
Power Consumption	DC24V, 55W, dual power supply
Operating Temperature	Standard -10~50°C, customizable -40~65°C wide temperature range version
Heat Dissipation	Air cooling with fan, which can be turned on and off, and can adapt the rotation speed according to the temperature.

Camera I/O Interface



Video Signal Output	Ethernet, 3G-SDI
Data Interface	10 Gigabit Ethernet, compatible with 2.5Gbps, 1Gbps
Input Signal	Trigger signal, sync signal, ready signal, exposure signal, IRIG-B
Output Signal	Trigger signal, sync signal, ready signal, exposure signal

7 X 24 hours Technical Support E-mail: info@sincevision.com

Service covering:

South Korea, Vietnam, Thailand, Malaysia, Singapore, United Kingdom, France, Italy, Spain, Germany



SinceVision's
LinkedIn Account



SinceVision's
YouTube Account