

High-speed Camera

High-speed HD Series



SH6-204

2048 x 1024 4000fps

2048 x 32 25000fps

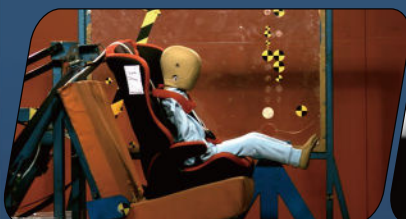
Support up to 24TB
non-volatile storage

IRIG-B timing
IRIG-B sync.

Standard 10GbE data transmission
interface, compatible with Gigabit
network transmission

Support intelligent image triggering
Automatic trigger with image change

SH6-204 is a full-featured high-speed camera built by SinceVision for high-end scientific research, national defense and military industry, aerospace, high-speed industry and other fields. It has an effective bandwidth of 80Gbps and excellent imaging quality by adopting special customized sensors and unique circuit design. At the same time, it has rich extensible interfaces, which makes high-speed imaging applications more possible.



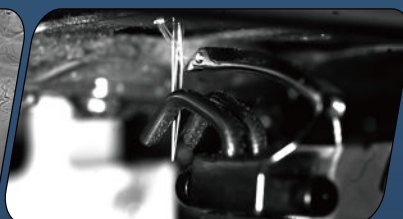
Automobile: Automobile collision



Industry: Crack extension



Research: Schlieren experiment



Industry: Motion of textile machine

SH6-204

Bit depth	8-bit Recording Time			10-bit Recording Time			12-bit Recording Time		
Resolution	Frame Rate (fps)	RAM 320GB (s)	Disc 12TB(min)	Frame Rate (fps)	RAM 320GB (s)	Disc 12TB(min)	Frame Rate (fps)	RAM 320GB (s)	Disc 12TB(min)
2048x1024	4000	40	24	2000	65	39	1000	109	65
2048x768	5000	43	26	2500	69	41	1200	121	72
2048x512	5600	58	34	2800	93	55	1400	156	93
2048x256	9000	72	43	4500	116	69	2200	198	118
2048x128	12000	109	65	6000	174	104	3000	291	173
2048x32	25000	209	125	12500	335	200	6000	582	347

※ The 320GB version has twice the recording time as 160GB of memory, so as to 80GB version compared to 40GB version;

※ The 12TB version has 3 times the recording time as 4TB of memory. The disc supports real-time writing in full resolution at full frame rate.

Max. Resolution	2048x1024
Full Frame Rate	4000fps
Max. Frame Rate	25000fps
Min. Exposure Time	1μs
Cell Size	9μm
Shutter	Global shutter
Bit Depth	8bit/10bit/12bit
Color	Monochrome (M)/ Color (C)
Sensitivity	ISO10000(M)/ISO3000(C)
Dynamic Range	64dB
Analog Gain	×2, ×4, ×8
Standard RAM	40GB/80GB/160GB/320GB
Extended Memory	4TB/12TB/24TB
Window Acquisition (ROI):	Support
Recording Mode	Start, End, Center, Random, Manual
Dimensions	210D×110W×110H, excluding protrusion parts
Camera Weight	3.8kg
Lens Mount	E Port (Adapt to F/C/EF mount)
Power Consumption	DC24V, 55W, dual power supply
Operating Temperature	Standard -10~50°C, customizable -40~65°C wide temperature range version
Heat Dissipation	Air cooling with fan, which can be turned on and off, and can adapt the rotation speed according to the temperature.

Camera I/O Interface



Video Signal Output	Ethernet, 3G-SDI
Data Interface	10 Gigabit Ethernet, compatible with 2.5Gbps, 1Gbps
Input Signal	Trigger signal, sync signal, ready signal, exposure signal, IRIG-B
Output Signal	Trigger signal, sync signal, ready signal, exposure signal

7 X 24 hours Technical Support E-mail: info@sincevision.com

Service covering:

South Korea, Vietnam, Thailand, Malaysia, Singapore, United Kingdom, France, Italy, Spain, Germany



SinceVision's
LinkedIn Account



SinceVision's
YouTube Account