

High-speed Camera

High-speed HD Series



SH6-207

2048 x 1024 6600fps

2048 x 32 50000fps

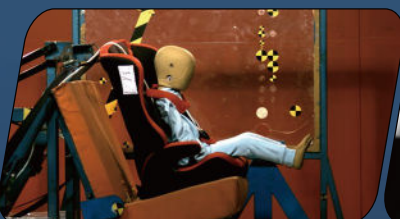
Support up to 24TB
non-volatile storage

IRIG-B timing
IRIG-B sync.

Standard 10GbE data transmission
interface, compatible with Gigabit
network transmission

Support intelligent image triggering
Automatic trigger with image change

SH6-207 is a full-featured high-speed camera built by SinceVision for high-end scientific research, national defense and military industry, aerospace, high-speed industry and other fields. It has an effective bandwidth of 130Gbps and excellent imaging quality by adopting special customized sensors and unique circuit design. At the same time, it has rich extensible interfaces, which makes high-speed imaging applications more possible.



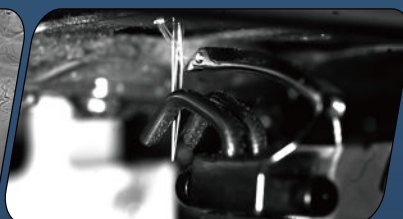
Automobile: Automobile collision



Industry: Crack extension



Research: Schlieren experiment



Industry: Motion of textile machine

SH6-207

Bit depth	8-bit Recording Time			10-bit Recording Time			12-bit Recording Time		
Resolution	Frame Rate (fps)	RAM 320GB (s)	Disc 12TB(min)	Frame Rate (fps)	RAM 320GB (s)	Disc 12TB(min)	Frame Rate (fps)	RAM 320GB (s)	Disc 12TB(min)
2048x1024	6600	24	14	3300	39	23	1650	66	39
2048x768	8500	25	15	4200	41	24	2000	72	43
2048x512	11000	29	17	5500	47	28	2500	87	52
2048x256	17000	38	22	8500	61	36	4000	109	65
2048x128	23000	56	33	11000	95	56	5700	153	91
2048x32	50000	104	62	25000	167	100	12000	291	173

※ The 320GB version has twice the recording time as 160GB of memory, so as to 80GB version compared to 40GB version;

※ The 12TB version has 3 times the recording time as 4TB of memory. The disc supports real-time writing in full resolution at full frame rate.

Max. Resolution	2048x1024
Full Frame Rate	6600fps
Max. Frame Rate	50000fps
Min. Exposure Time	1μs
Cell Size	9μm
Shutter	Global shutter
Bit Depth	8bit/10bit/12bit
Color	Monochrome (M)/ Color (C)
Sensitivity	ISO10000(M)/ISO3000(C)
Dynamic Range	64dB
Analog Gain	×2, ×4, ×8
Standard RAM	40GB/80GB/160GB/320GB
Extended Memory	4TB/12TB/24TB
Window Acquisition (ROI):	Support
Recording Mode	Start, End, Center, Random, Manual
Dimensions	210D×110W×110H, excluding protrusion parts
Camera Weight	3.8kg
Lens Mount	E Port (Adapt to F/C/EF mount)
Power Consumption	DC24V, 55W, dual power supply
Operating Temperature	Standard -10~50°C, customizable -40~65°C wide temperature range version
Heat Dissipation	Air cooling with fan, which can be turned on and off, and can adapt the rotation speed according to the temperature.

Camera I/O Interface



Video Signal Output	Ethernet, 3G-SDI
Data Interface	10 Gigabit Ethernet, compatible with 2.5Gbps, 1Gbps
Input Signal	Trigger signal, sync signal, ready signal, exposure signal, IRIG-B
Output Signal	Trigger signal, sync signal, ready signal, exposure signal

7 X 24 hours Technical Support E-mail: info@sincevision.com

Service covering:

South Korea, Vietnam, Thailand, Malaysia, Singapore, United Kingdom, France, Italy, Spain, Germany



SinceVision's
LinkedIn Account



SinceVision's
YouTube Account