

# High-speed Camera

## High-speed HD Series



### SH6-501

2560 x 2016 1000fps

2560 x 32 14000fps

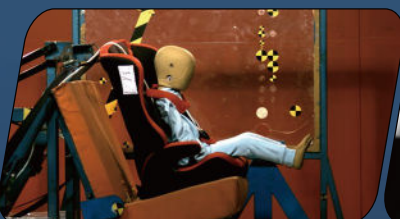
Support up to 24TB  
non-volatile storage

IRIG-B timing  
IRIG-B sync.

Standard 10GbE data transmission  
interface, compatible with Gigabit  
network transmission

Support intelligent image triggering  
Automatic trigger with image change

SH6-501 is a full-featured high-speed camera built by SinceVision for high-end scientific research, national defense and military industry, aerospace, high-speed industry and other fields. It has an effective bandwidth of 50Gbps and excellent imaging quality by adopting special customized sensors and unique circuit design. At the same time, it has rich extensible interfaces, which makes high-speed imaging applications more possible.



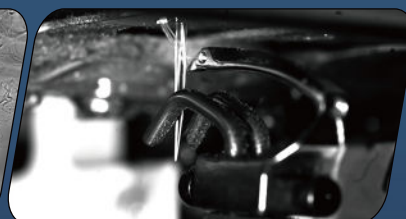
Automobile: Automobile collision



Industry: Crack extension



Research: Schlieren experiment



Industry: Motion of textile machine

# SH6-501

Bit depth	8-bit Recording Time			10-bit Recording Time			12-bit Recording Time		
Resolution	Frame Rate (fps)	RAM 320GB (s)	Disc 12TB(min)	Frame Rate (fps)	RAM 320GB (s)	Disc 12TB(min)	Frame Rate (fps)	RAM 320GB (s)	Disc 12TB(min)
2560x2016	1000	66	39	500	106	63	250	177	105
2560x1536	1400	62	37	700	99	59	350	166	99
2560x1280	1600	65	39	800	104	62	400	174	104
2560x512	3000	87	52	1500	139	83	750	233	138
2560x256	4500	116	69	2250	186	111	1100	317	189
2560x128	5600	187	111	2800	299	178	1400	499	297
2560x32	14000	299	178	7000	479	285	3500	798	476

※ The 320GB version has twice the recording time as 160GB of memory, so as to 80GB version compared to 40GB version;

※ The 12TB version has 3 times the recording time as 4TB of memory. The disc supports real-time writing in full resolution at full frame rate.

Max. Resolution	2560x2016
Full Frame Rate	1000fps
Max. Frame Rate	14000fps
Min. Exposure Time	1μs
Cell Size	9μm
Shutter	Global shutter
Bit Depth	8bit/10bit/12bit
Color	Monochrome (M)/ Color (C)
Sensitivity	ISO10000(M)/ISO3000(C)
Dynamic Range	64dB
Analog Gain	×2, ×4, ×8
Standard RAM	40GB/80GB/160GB/320GB
Extended Memory	4TB/12TB/24TB
Window Acquisition (ROI):	Support
Recording Mode	Start, End, Center, Random, Manual
Dimensions	210D×110W×110H, excluding protrusion parts
Camera Weight	3.8kg
Lens Mount	E Port (Adapt to F/C/EF mount)
Power Consumption	DC24V, 55W, dual power supply
Operating Temperature	Standard -10~50°C, customizable -40~65°C wide temperature range version
Heat Dissipation	Air cooling with fan, which can be turned on and off, and can adapt the rotation speed according to the temperature.

## Camera I/O Interface



Video Signal Output	Ethernet, 3G-SDI
Data Interface	10 Gigabit Ethernet, compatible with 2.5Gbps, 1Gbps
Input Signal	Trigger signal, sync signal, ready signal, exposure signal, IRIG-B
Output Signal	Trigger signal, sync signal, ready signal, exposure signal

7 X 24 hours Technical Support E-mail: [info@sincevision.com](mailto:info@sincevision.com)

## Service covering:

South Korea, Vietnam, Thailand, Malaysia, Singapore, United Kingdom, France, Italy, Spain, Germany



SinceVision's  
LinkedIn Account



SinceVision's  
YouTube Account