

High-speed Camera

High-speed HD Series



SH6-502

2560 x 2016 2000fps

2560 x 32 25000fps

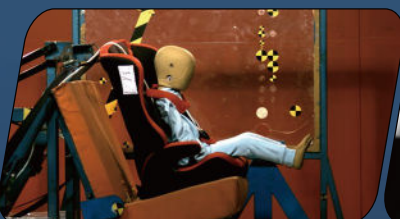
Support up to 24TB
non-volatile storage

IRIG-B timing
IRIG-B sync.

Standard 10GbE data transmission
interface, compatible with Gigabit
network transmission

Support intelligent image triggering
Automatic trigger with image change

SH6-502 is a full-featured high-speed camera built by SinceVision for high-end scientific research, national defense and military industry, aerospace, high-speed industry and other fields. It has an effective bandwidth of 100Gbps and excellent imaging quality by adopting special customized sensors and unique circuit design. At the same time, it has rich extensible interfaces, which makes high-speed imaging applications more possible.



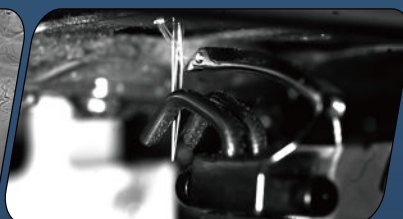
Automobile: Automobile collision



Industry: Crack extension



Research: Schlieren experiment



Industry: Motion of textile machine

SH6-502

Bit depth	8-bit Recording Time			10-bit Recording Time			12-bit Recording Time		
Resolution	Frame Rate (fps)	RAM 320GB (s)	Disc 12TB(min)	Frame Rate (fps)	RAM 320GB (s)	Disc 12TB(min)	Frame Rate (fps)	RAM 320GB (s)	Disc 12TB(min)
2560x2016	2000	33	19	1000	53	31	500	88	52
2560x1536	2700	32	19	1300	53	32	650	89	53
2560x1280	3000	34	20	1500	55	33	750	93	55
2560x512	5600	46	27	2800	74	44	1400	124	74
2560x256	9000	58	34	4500	93	55	2200	158	94
2560x128	12000	87	52	6000	139	83	3000	233	138
2560x32	25000	167	100	12500	268	160	6200	451	268

※ The 320GB version has twice the recording time as 160GB of memory, so as to 80GB version compared to 40GB version;

※ The 12TB version has 3 times the recording time as 4TB of memory. The disc supports real-time writing in full resolution at full frame rate.

Max. Resolution	2560x2016
Full Frame Rate	2000fps
Max. Frame Rate	25000fps
Min. Exposure Time	1μs
Cell Size	9μm
Shutter	Global shutter
Bit Depth	8bit/10bit/12bit
Color	Monochrome (M)/ Color (C)
Sensitivity	ISO10000(M)/ISO3000(C)
Dynamic Range	64dB
Analog Gain	×2, ×4, ×8
Standard RAM	40GB/80GB/160GB/320GB
Extended Memory	4TB/12TB/24TB
Window Acquisition (ROI):	Support
Recording Mode	Start, End, Center, Random, Manual
Dimensions	210D×110W×110H, excluding protrusion parts
Camera Weight	3.8kg
Lens Mount	E Port (Adapt to F/C/EF mount)
Power Consumption	DC24V, 55W, dual power supply
Operating Temperature	Standard -10~50°C, customizable -40~65°C wide temperature range version
Heat Dissipation	Air cooling with fan, which can be turned on and off, and can adapt the rotation speed according to the temperature.

Camera I/O Interface



Video Signal Output	Ethernet, 3G-SDI
Data Interface	10 Gigabit Ethernet, compatible with 2.5Gbps, 1Gbps
Input Signal	Trigger signal, sync signal, ready signal, exposure signal, IRIG-B
Output Signal	Trigger signal, sync signal, ready signal, exposure signal

7 X 24 hours Technical Support E-mail: info@sincevision.com

Service covering:

South Korea, Vietnam, Thailand, Malaysia, Singapore, United Kingdom, France, Italy, Spain, Germany



SinceVision's
LinkedIn Account



SinceVision's
YouTube Account