

High-speed Camera

High-speed HD Series



SH6-504

2560 x 2016 3600fps

2560 x 32 50000fps

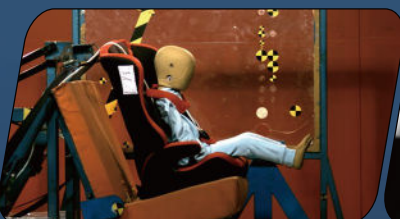
Support up to 24TB
non-volatile storage

IRIG-B timing
IRIG-B sync.

Standard 10GbE data transmission
interface, compatible with Gigabit
network transmission

Support intelligent image triggering
Automatic trigger with image change

SH6-504 is a full-featured high-speed camera built by SinceVision for high-end scientific research, national defense and military industry, aerospace, high-speed industry and other fields. It has an effective bandwidth of 170Gbps and excellent imaging quality by adopting special customized sensors and unique circuit design. At the same time, it has rich extensible interfaces, which makes high-speed imaging applications more possible.



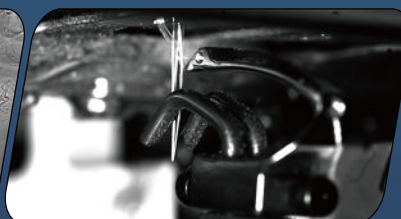
Automobile: Automobile collision



Industry: Crack extension



Research: Schlieren experiment



Industry: Motion of textile machine

SH6-504

Bit depth	8-bit Recording Time			10-bit Recording Time			12-bit Recording Time		
Resolution	Frame Rate (fps)	RAM 320GB (s)	Disc 12TB(min)	Frame Rate (fps)	RAM 320GB (s)	Disc 12TB(min)	Frame Rate (fps)	RAM 320GB (s)	Disc 12TB(min)
2560x2016	3600	18	11	1800	29	17	900	49	29
2560x1536	4800	18	10	2400	29	17	1200	48	28
2560x1280	5600	18	11	2800	29	17	1400	49	29
2560x512	11000	23	14	5500	38	22	2700	64	38
2560x256	17000	30	18	8500	49	29	4200	83	49
2560x128	23000	45	27	11500	72	43	5700	122	73
2560x32	50000	83	50	25000	134	80	12000	233	138

※ The 320GB version has twice the recording time as 160GB of memory, so as to 80GB version compared to 40GB version;

※ The 12TB version has 3 times the recording time as 4TB of memory. The disc supports real-time writing in full resolution at full frame rate.

Max. Resolution 2560x2016

Full Frame Rate 3600fps

Max. Frame Rate 500000fps

Min. Exposure Time 1μs

Cell Size 9μm

Shutter Global shutter

Bit Depth 8bit/10bit/12bit

Color Monochrome (M)/ Color (C)

Sensitivity ISO10000(M)/ISO3000(C)

Dynamic Range 64dB

Analog Gain ×2, ×4, ×8

Standard RAM 40GB/80GB/160GB/320GB

Extended Memory 4TB/12TB/24TB

Window Acquisition (ROI): Support

Recording Mode Start, End, Center, Random, Manual

Dimensions 210D×110W×110H, excluding protrusion parts

Camera Weight 3.8kg

Lens Mount E Port (Adapt to F/C/EF mount)

Power Consumption DC24V, 55W, dual power supply

Operating Temperature Standard -10~50°C, customizable -40~65°C wide temperature range version

Heat Dissipation Air cooling with fan, which can be turned on and off, and can adapt the rotation speed according to the temperature.

Camera I/O Interface



Video Signal Output Ethernet, 3G-SDI

Data Interface 10 Gigabit Ethernet, compatible with 2.5Gbps, 1Gbps

Input Signal Trigger signal, sync signal, ready signal, exposure signal, IRIG-B

Output Signal Trigger signal, sync signal, ready signal, exposure signal

7 X 24 hours Technical Support

E-mail: info@sincevision.com

Service covering:

South Korea, Vietnam, Thailand, Malaysia, Singapore, United Kingdom, France, Italy, Spain, Germany



SinceVision's
LinkedIn Account



SinceVision's
YouTube Account