

# High-speed Camera

## High-speed HD Series



### SH6-505

2560 x 2016 4500fps

2560 x 32 56000fps

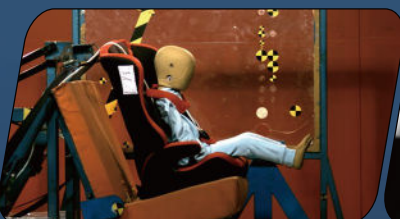
Support up to 24TB  
non-volatile storage

IRIG-B timing  
IRIG-B sync.

Standard 10GbE data transmission  
interface, compatible with Gigabit  
network transmission

Support intelligent image triggering  
Automatic trigger with image change

SH6-505 is a full-featured high-speed camera built by SinceVision for high-end scientific research, national defense and military industry, aerospace, high-speed industry and other fields. It has an effective bandwidth of 220Gbps and excellent imaging quality by adopting special customized sensors and unique circuit design. At the same time, it has rich extensible interfaces, which makes high-speed imaging applications more possible.



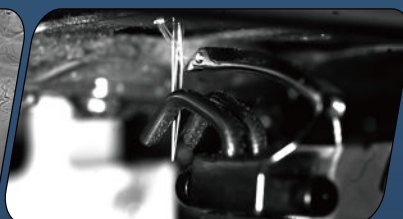
Automobile: Automobile collision



Industry: Crack extension



Research: Schlieren experiment



Industry: Motion of textile machine

# SH6-505

Bit depth	8-bit Recording Time			10-bit Recording Time			12-bit Recording Time		
Resolution	Frame Rate (fps)	RAM 320GB (s)	Disc 12TB(min)	Frame Rate (fps)	RAM 320GB (s)	Disc 12TB(min)	Frame Rate (fps)	RAM 320GB (s)	Disc 12TB(min)
2560x2016	4500	14	8	2200	24	14	1125	39	23
2560x1536	5600	15	9	2800	24	14	1400	41	24
2560x1280	6600	15	9	3300	25	15	1650	42	25
2560x512	13000	20	12	6500	32	19	3200	54	32
2560x256	20000	26	15	10000	41	25	5000	69	41
2560x128	27000	38	23	13500	62	37	6700	104	62
2560x32	56000	74	44	28000	119	71	14000	199	119

※ The 320GB version has twice the recording time as 160GB of memory, so as to 80GB version compared to 40GB version;

※ The 12TB version has 3 times the recording time as 4TB of memory. The disc supports real-time writing in full resolution at full frame rate.

**Max. Resolution** 2560x2016

**Full Frame Rate** 4500fps

**Max. Frame Rate** 560000fps

**Min. Exposure Time** 1μs

**Cell Size** 9μm

**Shutter** Global shutter

**Bit Depth** 8bit/10bit/12bit

**Color** Monochrome (M)/ Color (C)

**Sensitivity** ISO10000(M)/ISO3000(C)

**Dynamic Range** 64dB

**Analog Gain** ×2, ×4, ×8

**Standard RAM** 40GB/80GB/160GB/320GB

**Extended Memory** 4TB/12TB/24TB

**Window Acquisition (ROI):** Support

**Recording Mode** Start, End, Center, Random, Manual

**Dimensions** 210D×110W×110H, excluding protrusion parts

**Camera Weight** 3.8kg

**Lens Mount** E Port (Adapt to F/C/EF mount)

**Power Consumption** DC24V, 55W, dual power supply

**Operating Temperature** Standard -10~50°C, customizable -40~65°C wide temperature range version

**Heat Dissipation** Air cooling with fan, which can be turned on and off, and can adapt the rotation speed according to the temperature.

## Camera I/O Interface



**Video Signal Output** Ethernet, 3G-SDI

**Data Interface** 10 Gigabit Ethernet, compatible with 2.5Gbps, 1Gbps

**Input Signal** Trigger signal, sync signal, ready signal, exposure signal, IRIG-B

**Output Signal** Trigger signal, sync signal, ready signal, exposure signal

**7 X 24 hours Technical Support**

**E-mail: info@sincevision.com**

## Service covering:

South Korea, Vietnam, Thailand, Malaysia, Singapore, United Kingdom, France, Italy, Spain, Germany



SinceVision's  
LinkedIn Account



SinceVision's  
YouTube Account